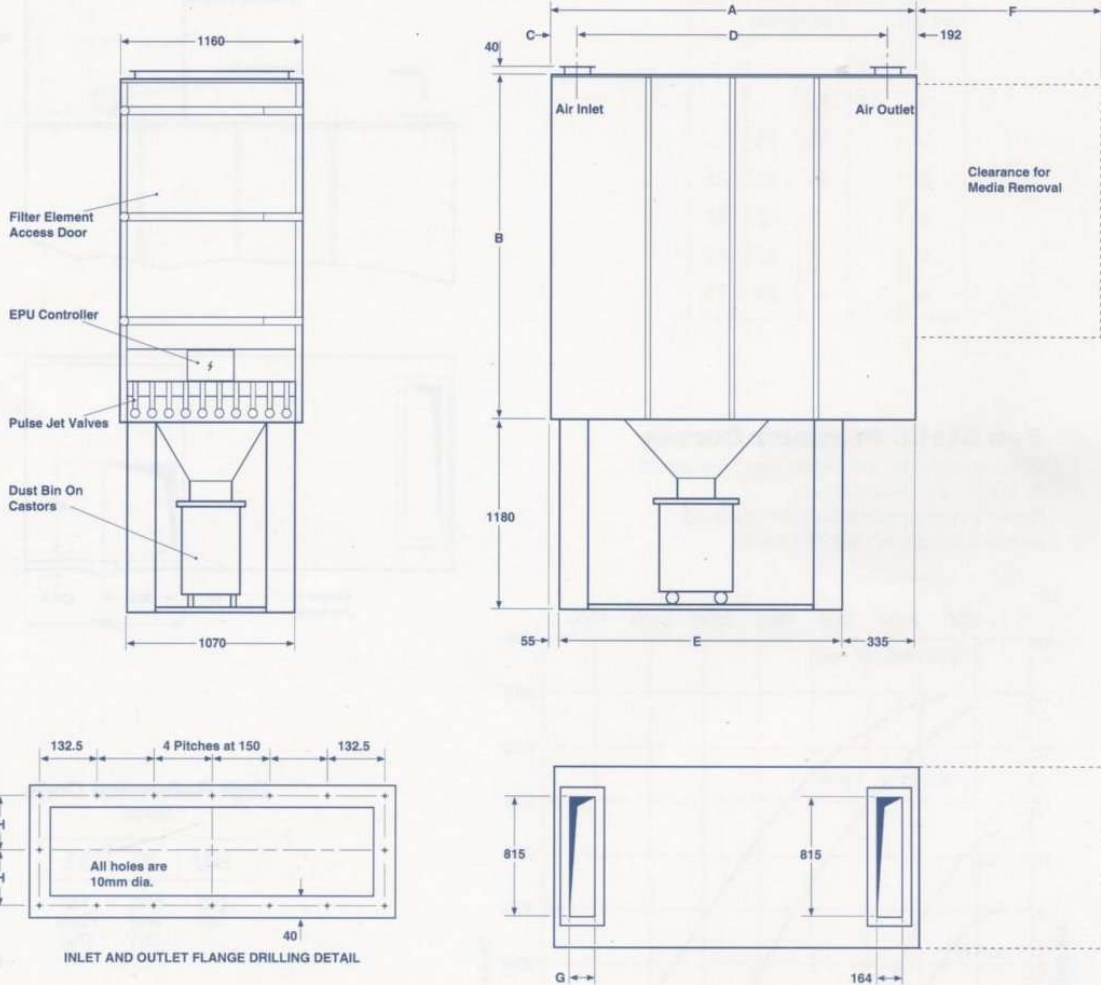


# E-Pulse Filter - Model EPU



**ECS**



**Controller.** Fully automatic solid state electronic timer operating solenoid air valves. Factory pre-set, but fully adjustable for pulse duration and pulse interval. Controller contained in weather-proof enclosure and factory wired to solenoid valves.

**Electrical Equipment -**  
Controller incorporates transformer enabling outputs of 110V, 220V or 240V/ single phase/ 50Hz Fan Motor - Suitable for operation on 220/ 380/ 415V/ 3ph/ 50Hz

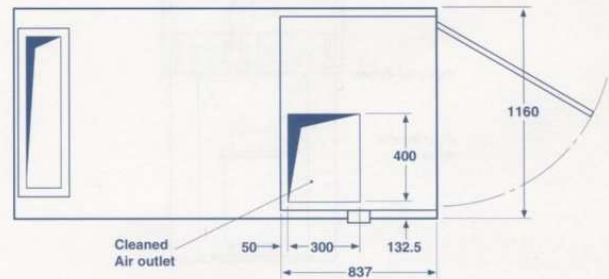
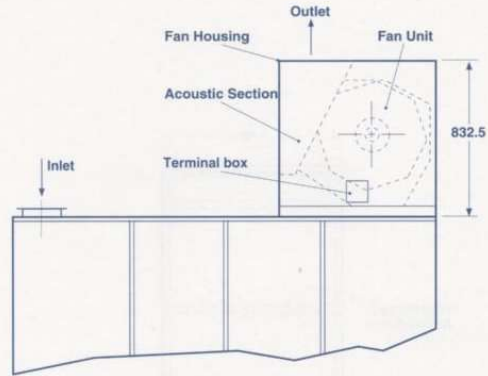
Filter Size m <sup>2</sup>	Filter Size ft <sup>2</sup>	Dimensions								Compressed Air Requirements	
		A	B	C	D	E	F	G	H	m <sup>3</sup> /hr	ft <sup>3</sup> /min
7	75	1800	1102	150	1458	1410	1200	164	107	5.4	3.2
10	108	1800	1102	150	1458	1410	1200	164	107	5.4	3.2
14	150	1800	1662	150	1458	1410	1200	164	107	8.5	5.0
20	215	1800	1662	150	1458	1410	1200	164	107	8.5	5.0
30	323	2300	1662	150	1958	1910	1200	164	107	10.1	6.0
45	484	2300	2222	150	1958	1910	1200	164	107	11.4	6.7
60	646	2300	2782	175	1933	1910	1200	250	150	15.8	9.5

Air consumptions based on average duties.  
A supply of clean, dry compressed air is required at a minimum of 5.4 bar (80 p.s.i.g.).

# E-Pulse Filter - Model EPU - Fan Details

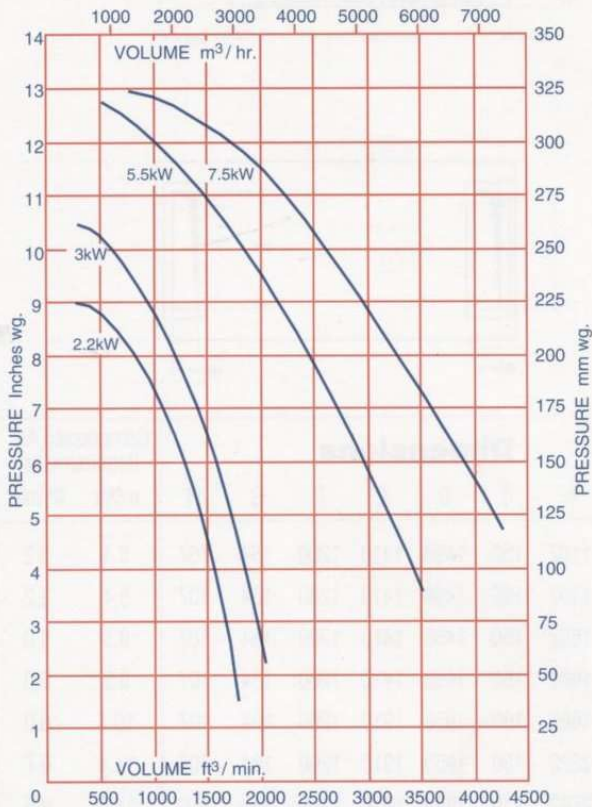
## Unit/Fan Combination

Unit Size	Fan Sizes (Kw)			
7	2.2			
10	2.2	3.0		
14		3.0	5.5	
20		3.0	5.5	7.5
30			5.5	7.5
45			5.5	7.5
60			5.5	7.5



## Fan Static Pressure Curves

On average application pressure loss across filter fabric is 75-100mm s.w.g. (3-4 inches s.w.g.)  
 Fan performance curves show available volume and pressure at unit inlet with clean filter media.



## Unit Reference Code

Example

EPU	30	5.5
Unit Type	Filter Area (m <sup>2</sup> )	Fan Power (Kw)

## Noise Level Data

Fan	2.2	3.0	5.5	7.5
dBA	79	81	87	89

Noise levels are taken 1m from the front of the dust collector and 1.5m from floor level. Dust collectors with top outlets operating in typical industrial environments handling optimum air volumes. Site conditions will effect noise levels. Additional sound attenuation is available for all dust collectors.

## Environmental Control Systems Limited

Hare Park Mills, Hare Park Lane, Liversedge,

West Yorkshire. WF15 8EP Tel: (0274) 871490 Fax: (0274) 869956

**DS13**

We reserve the right to amend specifications without prior notice



THE QUEENS AWARD FOR EXPORT ACHIEVEMENT